

**PLEASE CHECK WWW.MOLEX.COM FOR LATEST PART INFORMATION**

**Part Number:** [0475480001](#)  
**Status:** **Active**  
**Description:** 2.54mm (.100") Pitch SIM Card Holder, 6 Circuits, Surface Mount, with PCB Retention Solder Tabs, Housing Height 1.90mm (.075"), Lead Free

**Documents:**

[3D Model](#) [Product Specification PS-47548-001 \(PDF\)](#)  
[Drawing \(PDF\)](#) [RoHS Certificate of Compliance \(PDF\)](#)

**General**

Product Family	Memory Card Sockets
Series	<a href="#">47548</a>
Button Type	N/A
Comments	Housing Height: 1.90mm (.075")
Component Type	Card Holder (Host)
Product Name	SIM
Type	N/A

**Physical**

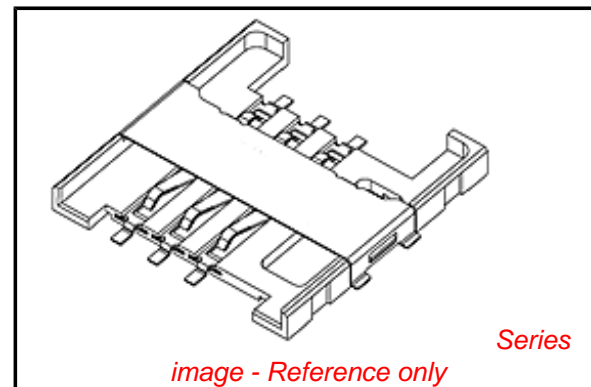
Card Detection Switch	No
Circuits (Loaded)	6
Circuits (maximum)	6
Color - Resin	Black
Durability (mating cycles max)	5,000
Ejector Button Side	No Ejector Button Present
Entry Angle	Horizontal
Keying to Mating Part	Yes
Material - Metal	Phosphor Bronze
Material - Plating Mating	Gold
Material - Plating Termination	Gold
Material - Resin	High Temperature Thermoplastic
PC Tail Length (in)	0.000 In
PC Tail Length (mm)	0.00 mm
PCB Locator	No
PCB Mounting Side	Normal
PCB Retention	Yes
Packaging Type	Embossed Tape on Reel
Pitch - Mating Interface (in)	0.100 In
Pitch - Mating Interface (mm)	2.54 mm
Pitch - Term. Interface (in)	0.100 In
Pitch - Term. Interface (mm)	2.54 mm
Plating min: Mating (µin)	15
Plating min: Mating (µm)	0.38
Plating min: Termination (µin)	2
Plating min: Termination (µm)	0.05
Ports	1
Temperature Range - Operating	-40°C to +85°C
Termination Interface: Style	Surface Mount

**Electrical**

Current - Maximum per Contact	0.5A
Shielded	No
Voltage - Maximum	5V

**Solder Process Data**

Duration at Max. Process Temperature (seconds)	3
--	---



**EU RoHS**

**ELV and RoHS  
Compliant**  
**REACH SVHC  
Contains SVHC: No**  
**Halogen-Free  
Status**

**China RoHS**



**Need more information on product  
environmental compliance?**

Email [productcompliance@molex.com](mailto:productcompliance@molex.com)  
For a multiple part number RoHS Certificate of Compliance, [click here](#)

Please visit the [Contact Us](#) section for any non-product compliance questions.

**Search Parts in this Series**

[47548Series](#)

**Mates With**

Standard SIM Card

Lead-free Process Capability	Reflow Capable (SMT only)
Max. Cycles at Max. Process Temperature	1
Process Temperature max. C	250

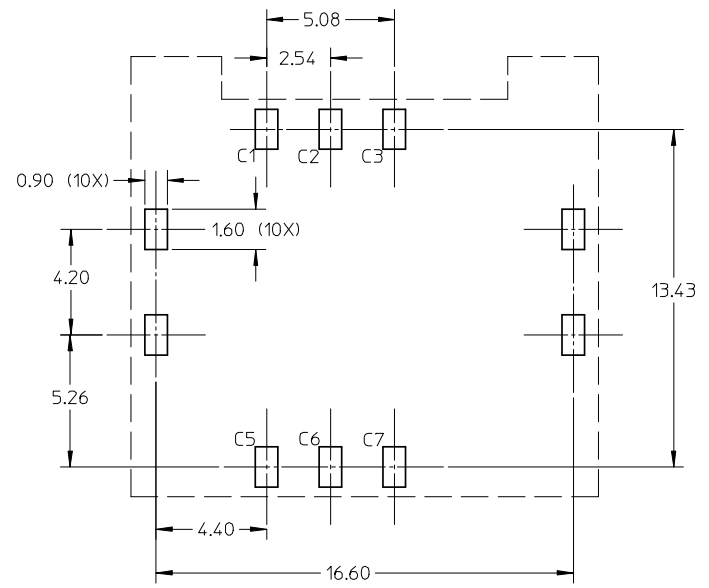
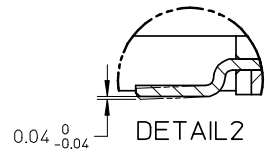
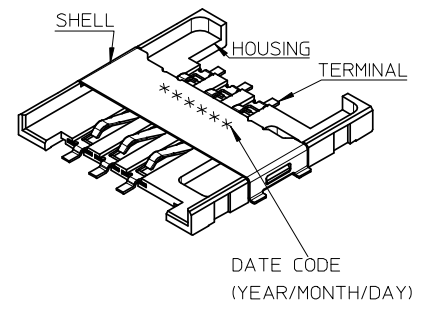
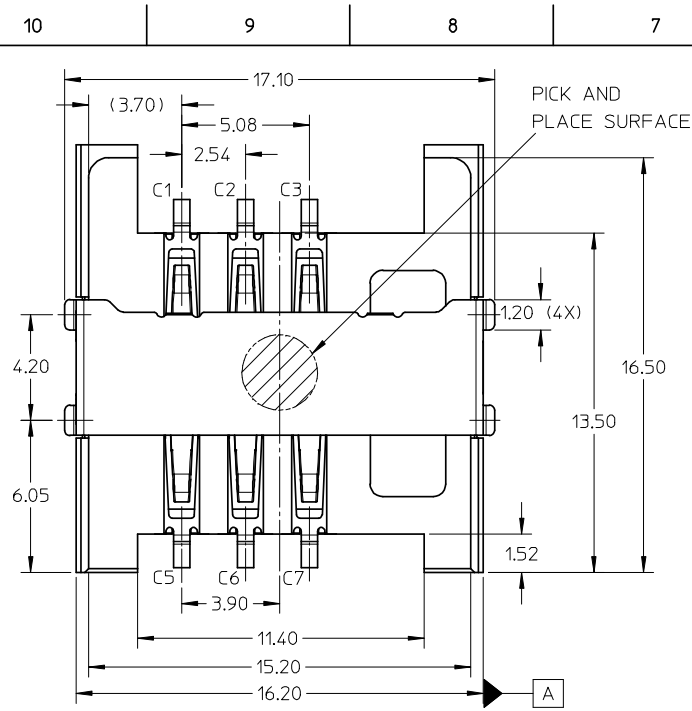
### **Material Info**

### **Reference - Drawing Numbers**

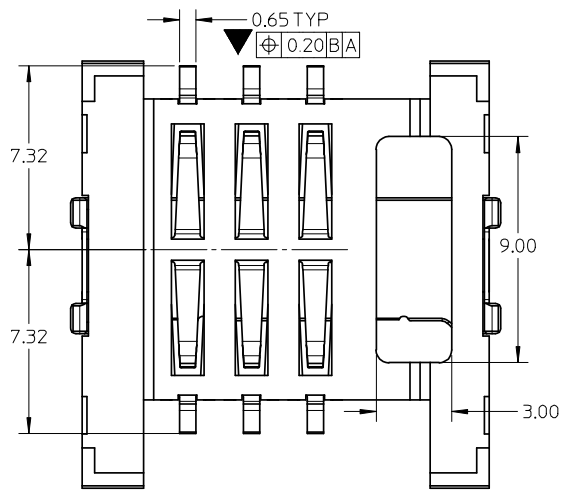
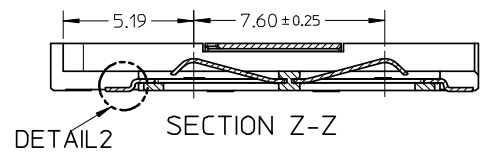
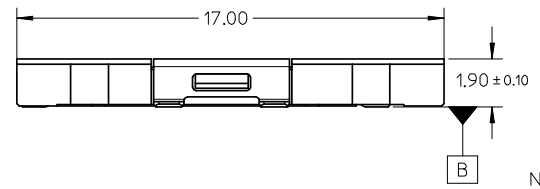
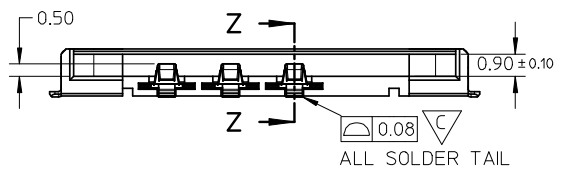
Packaging Specification	PK-47548-001
Product Specification	PS-47548-001
Sales Drawing	SD-47548-001
Test Summary	TS-47548-001

This document was generated on 05/25/2010

**PLEASE CHECK [WWW.MOLEX.COM](http://WWW.MOLEX.COM) FOR LATEST PART INFORMATION**



RECOMMENDED PCB LAYOUT  
DIMENSIONS GENERAL TOLERANCE : ±0.05



NOTE:  
 1 MATERIAL: HOUSING: LCP, GLASS FILLED, UL 94V-0, COLOR:BLACK, TERMINAL: PHOSPHOR BRONZE, THICKNESS:0.15MM SHELL: STAINLESS STEEL, THICKNESS:0.20MM  
 2 FINISH: TERMINAL: 50 μ MIN NICKEL PLATING OVER ALL. 15 μ MIN GOLD PLATING ON CONTACT AREA GOLD FLASH PLATING ON SOLDER AREA SHELL: GOLD FLASH OVER 50 μ MIN NICKEL ON SOLDERING AREA  
 3 PRODUCT SPECIFICATION: PS-47548-001  
 4 PACKAGE INFORMATION: PK-47548-001

RELEASED EC NO: SH2008-0563 DRWN: YWANG91 CHKD: YI ZHU APPR: HWANG	2008/05/15 2008/05/19 2008/05/23	DESCRIPTION QUALITY SYMBOLS ▽=1 ◻=1	GENERAL TOLERANCES (UNLESS SPECIFIED)		DIMENSION STYLE <b>MM ONLY</b>	SCALE <b>5:1</b>	DESIGN UNITS <b>METRIC</b>	THIRD ANGLE PROJECTION		
			4 PLACES ± --- ± ---	3 PLACES ± --- ± ---	2 PLACES ± 0.15 ± ---	1 PLACE ± --- ± ---	ANGULAR ± 1 °	DRAWN BY YWANG	DATE 2007/01/16	TITLE <b>ASSEMBLY SIM CARD CONNECTOR 1.9MM HEIGHT</b>
			DRAFT WHERE APPLICABLE MUST REMAIN WITHIN DIMENSIONS	MATERIAL NO. <b>475480001</b>	APPROVED BY JNCHEN	DATE 2007/01/18	MOLEX INCORPORATED	DOCUMENT NO. <b>SD-47548-001</b>	SHEET NO. <b>1 OF 1</b>	
			THIS DRAWING CONTAINS INFORMATION THAT IS PROPRIETARY TO MOLEX INCORPORATED AND SHOULD NOT BE USED WITHOUT WRITTEN PERMISSION							